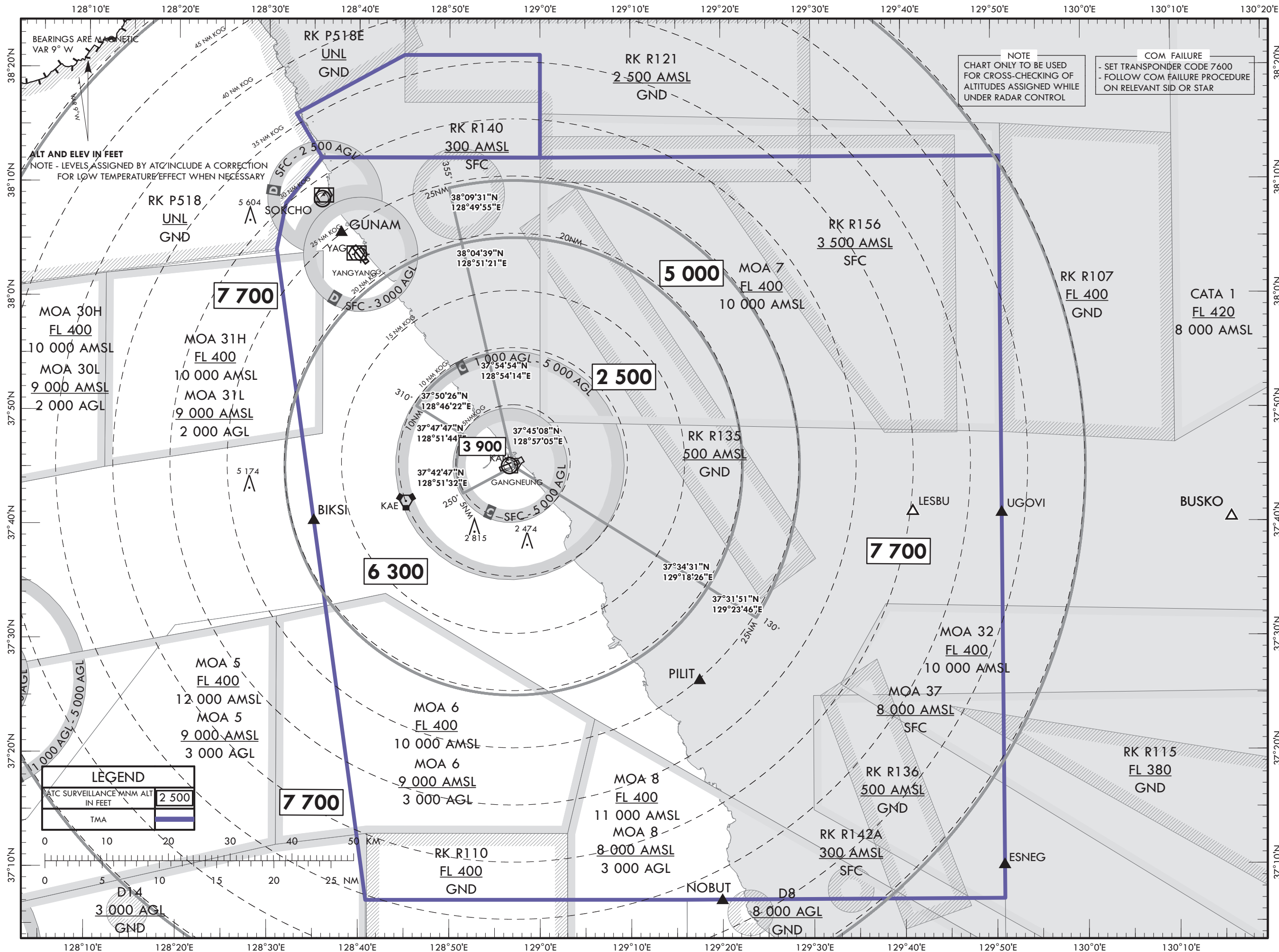


ATC SURVEILLANCE MINIMUM ALTITUDE CHART - ICAO AERODROME ELEV 241 ft TRANSITION ALT 14 000 ft APP 124.6 GANGNEUNG/Gangneung Intl(RKNY)

TMA Gangneung



Change : Information of reporting point, Establishment of fix(UGOVI, ESNEG) and Information of fix(NOMEX → LESBU).